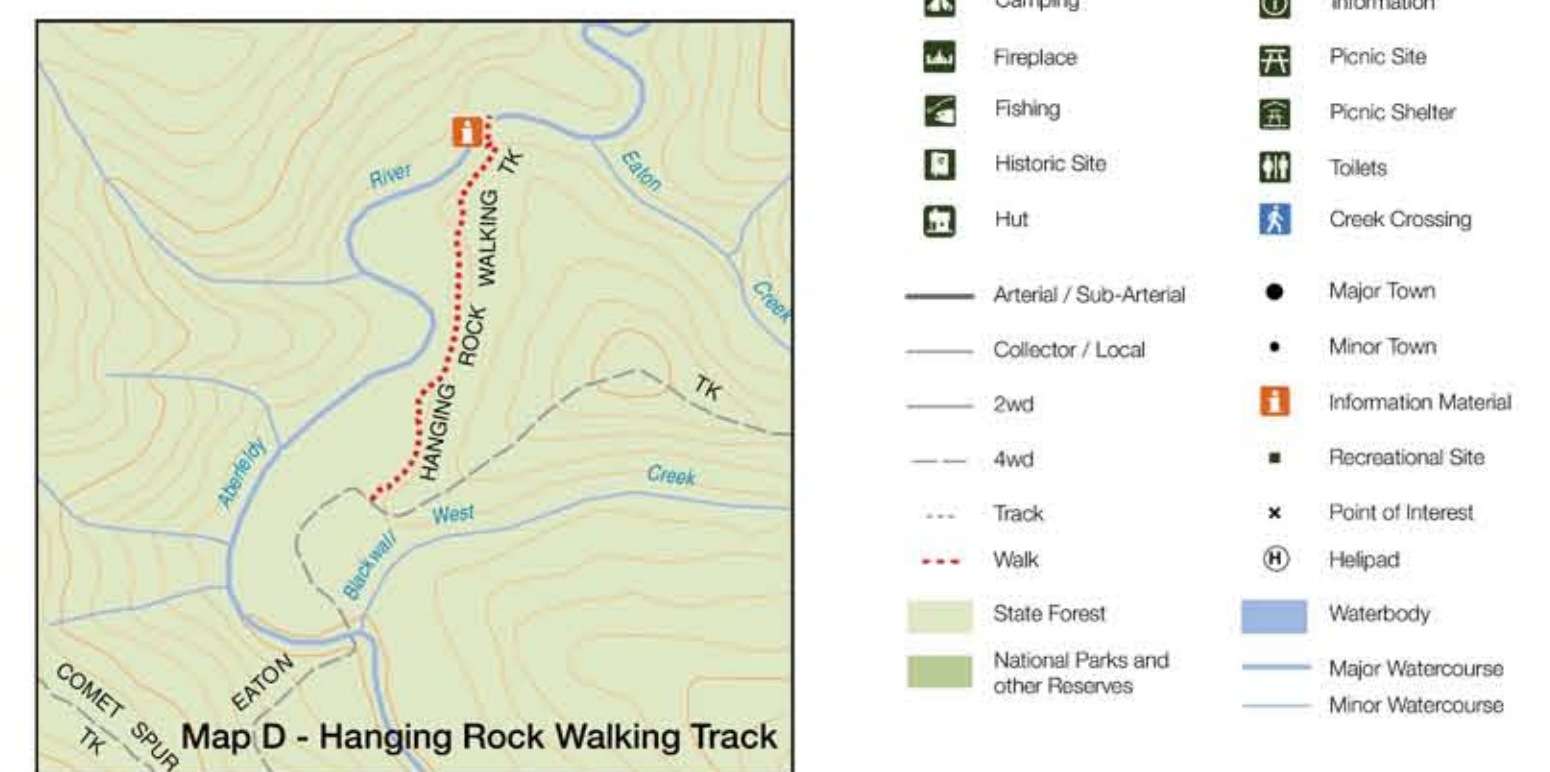
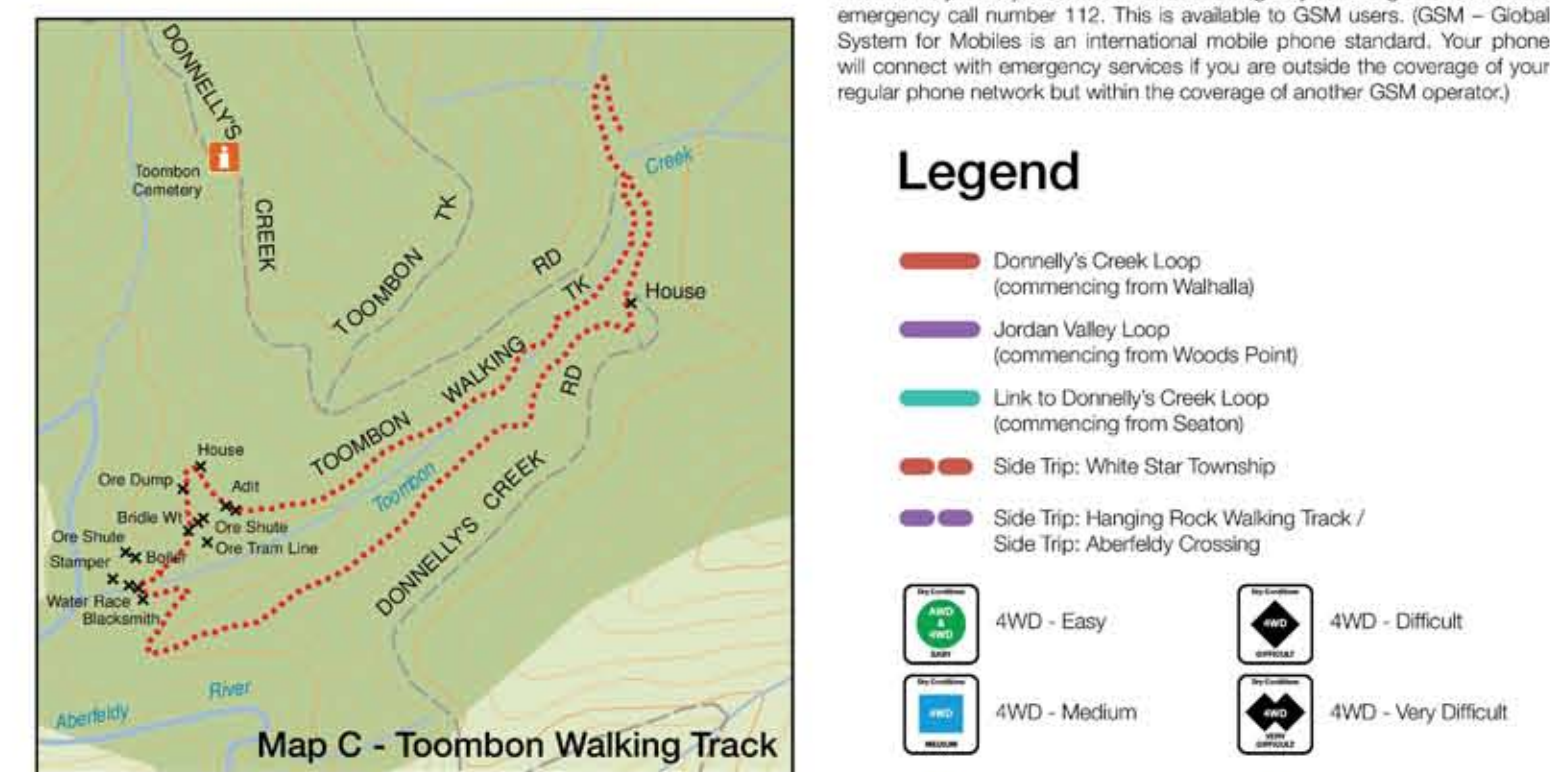
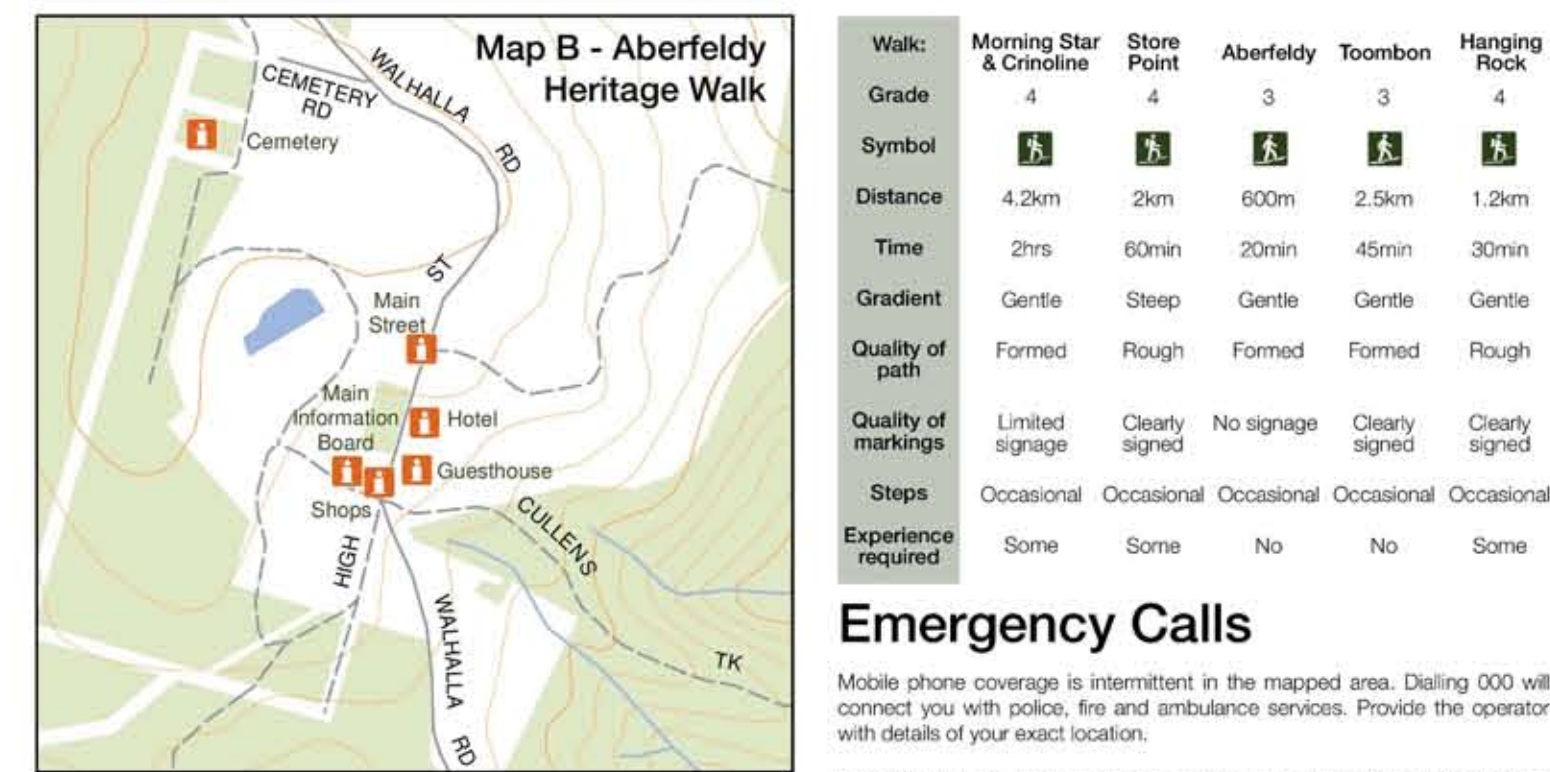
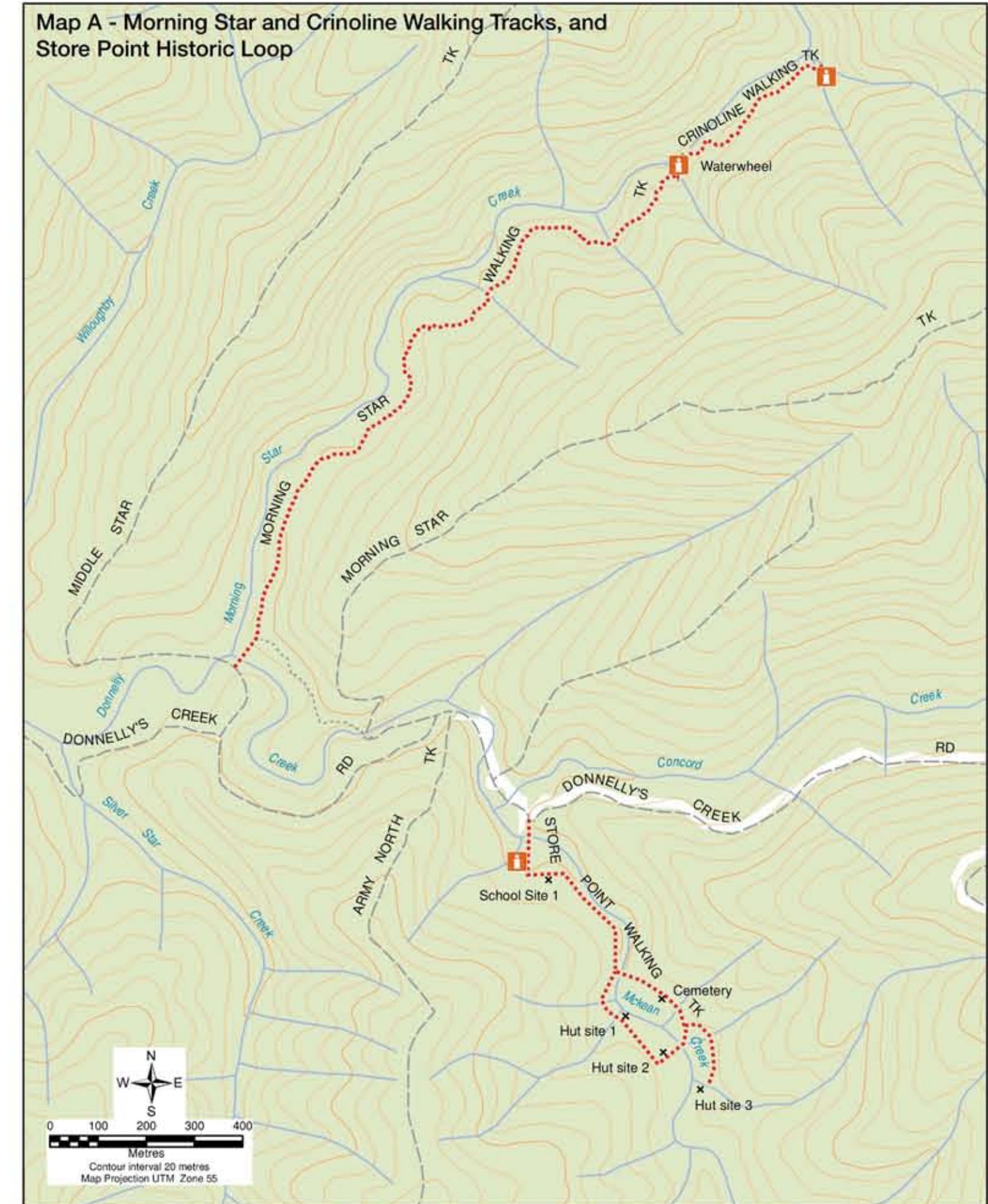
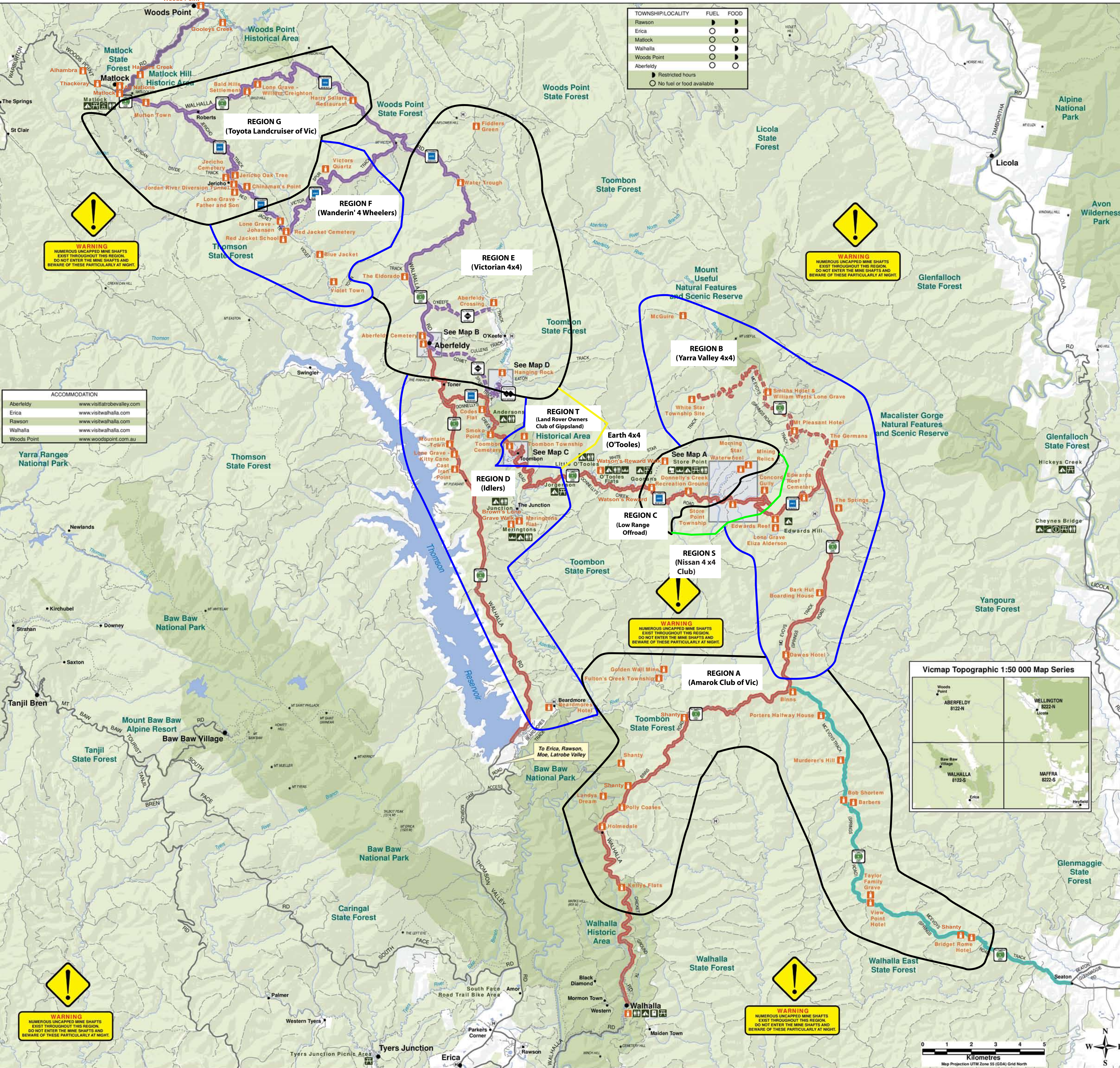


Aberfeldy Track - Back Road Tours Guide

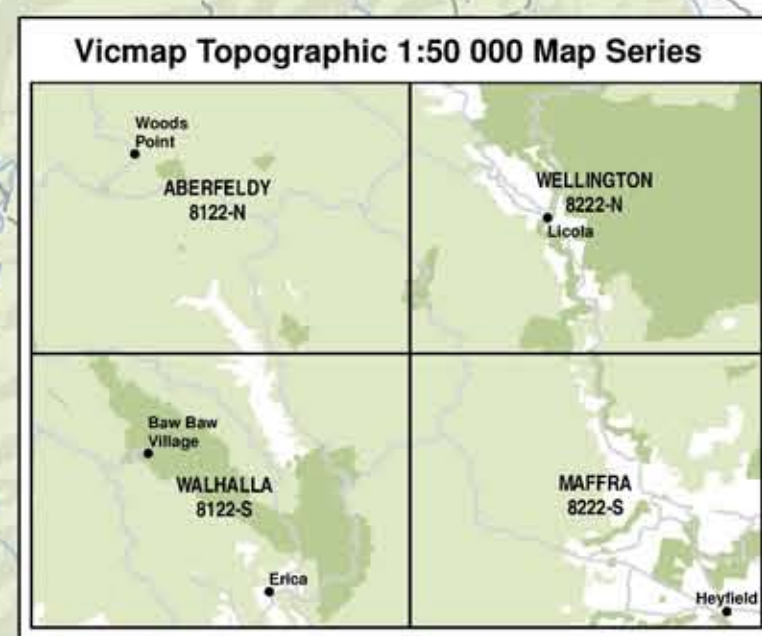


TOWNSHIP/LOCALITY	FUEL	FOOD
Rawson	●	●
Erica	○	●
Matlock	○	●
Walhalla	○	●
Woods Point	○	○
Aberfeldy	○	○

● Restricted hours
 ○ No fuel or food available



ACCOMMODATION	
Aberfeldy	www.visitabrookvalley.com
Erica	www.visitwalhalla.com
Rawson	www.visitwalhalla.com
Walhalla	www.visitwalhalla.com
Woods Point	www.woodspoint.com.au



Walk:	Morning Star & Crinoline	Store Point	Aberfeldy	Toombon	Hanging Rock
Grade	4	4	3	3	4
Symbol	▲	▲	▲	▲	▲
Distance	4.2km	2km	600m	2.5km	1.2km
Time	2hrs	60min	20min	45min	30min
Gradient	Gentle	Steep	Gentle	Gentle	Gentle
Quality of path	Formed	Rough	Formed	Formed	Rough
Quality of markings	Limited signage	Clearly signed	No signage	Clearly signed	Clearly signed
Steps	Occasional	Occasional	Occasional	Occasional	Occasional
Experience required	Some	Some	No	No	Some

Emergency Calls

Mobile phone coverage is intermittent in the mapped area. Dialing 000 will connect you with police, fire and ambulance services. Provide the operator with details of your exact location.

In addition, you may be able to make an emergency call using the international emergency call number 112. This is available to GSM users. (GSM - Global System for Mobiles is an international mobile phone standard. Your phone will connect with emergency services if you are outside the coverage of your regular phone network but within the coverage of another GSM operator.)

Legend

- Donnelly's Creek Loop (commencing from Walhalla)
- Jordan Valley Loop (commencing from Woods Point)
- Link to Donnelly's Creek Loop (commencing from Seaton)
- Side Trip: White Star Township
- Side Trip: Hanging Rock Walking Track / Side Trip: Aberfeldy Crossing

4WD - Easy	4WD - Difficult
4WD - Medium	4WD - Very Difficult
Camping	Information
Fireplace	Picnic Site
Fishing	Picnic Shelter
Historic Site	Toilets
Hut	Creek Crossing
Arterial / Sub-Arterial	Major Town
Collector / Local	Minor Town
2wd	Information Material
4wd	Recreational Site
Track	Point of Interest
Walk	Helpaid
State Forest	Waterbody
National Parks and other Reserves	Major Watercourse
	Minor Watercourse